

**Pads**  
**made of closed cell foam**  
**Stufenbelag**  
**aus geschlossenem Schaumstoff**  
**Almohadillas**  
**con espuma de células cerradas**  
**Tappeto**  
**morbido antiscivolo**

**\*NEW:** Closed cell foam – Auto-adhesive – Replaceable Light weight – Non-slip – Temperature resistant 10°C +90°C Traction 22 Kg/cm – Density 200 Kg/m<sup>3</sup> – Non absorbs liquids and grease (HACCP) – Shore 55/60 – UV-resistant – Clean Ozone 168H/200 pphm – Hardness 10% 4,5 Kg/cm – EN 71 : safe for children >3 years (European Standard).

**SUMMERWIND\***



**\*NEUHEIT:** aus Schaumstoff mit geschlossenen Zelle – selbstklebend austauschbar – leicht, Versand per Brief. Extrem rutschhemmend - pflegeleicht mit Hochdruck-Reiniger bis 6 ATM und ohne chemische Zusätze - temperaturbeständig (-10 +90 °C) – reißfest 22 Kg/cm - Dichte 200 Kg/m<sup>3</sup> – Ölbeständig (HACCP) - Härte 55/60 Barkol – UV-beständig – Ozonfest 168H/200 pphm - druckfest 10% - 4,5 Kg/cm – EN 71 : Sicherheit für Kinder.

**HARLEQUIN\***



**\*NUEVO:** De espuma de células cerradas – Auto-adhesivas Recambiables – Peso ligero (se pueden enviar por correo) Anti deslizantes – Lavables – Resistencia de la temperatura: -10°C+90°C – Tracción de 22 Kg/cm. Densidad de 200 Kg/m<sup>3</sup> – No absorbe los líquidos. Humedad. del 2% (HACCP) – Orillas de 55/60 – Resistencia a UV . Ozono 1681 I/200 pphm – Resistencia 10%-4,5 Kg/cm. EN 71 seguridad para niños de aprox. 3 años. A ser limpiado con limpiadores de alta presión

**ARMY\***



**\*NUOVO:** Schiuma e cellule chiuse – autoadesivo – sostituibile - antiscivolo – leggero – respinge acqua, petrolio, olio, catrame, grasso, fenolo, acido ecc. (HACCP) – resistenza alla temperatura: -10°+90°C – resistenza alla trazione: 22 Kg/cm<sup>2</sup> – densità: 200 Kg/ m<sup>3</sup> – umidità: 2% – dimensioni: mm 334 x mm 210 – resistente ai raggi UV – resistenza all'ozono 168H/200 pphm – durezza 10% – 4,5 Kg/ cm<sup>2</sup> – per bambini di età superiore a tre anni (standard EN 71) – pulire con idropulitrice senza detersivi, 3-6 ATM

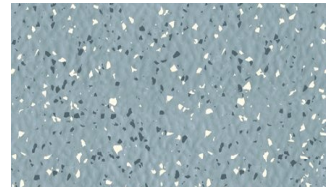
**SCARLET\***


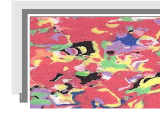

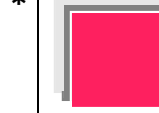

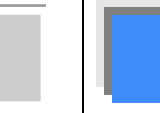


**DISSIPATIVE CARBON Pads Standard ESD\*\* 23001**

For ESD ladders only  
 Factory installed  
 spotted blue colour  
 gripping surface

**ESD\*\***



					
<b>H</b> <b>HARLEQUIN</b> 23006	<b>S</b> <b>SUMMERWIND</b> 23005	<b>A</b> <b>ARMY</b> 23004	<b>R</b> <b>SCARLET</b> 23003	<b>W</b> <b>CRISTALL</b> 23002	<b>M</b> <b>MARINER</b> 22999

**Tread-layers  
with closed cells  
are easy  
to clean  
without  
detergents**



**Jumbo Step**



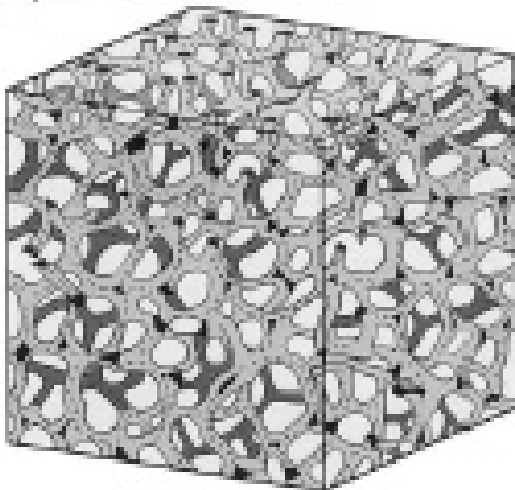
**King Step**



**King Step Rail**

Photo + tech specs + price : <http://www.skylax.com/pricese.htm>

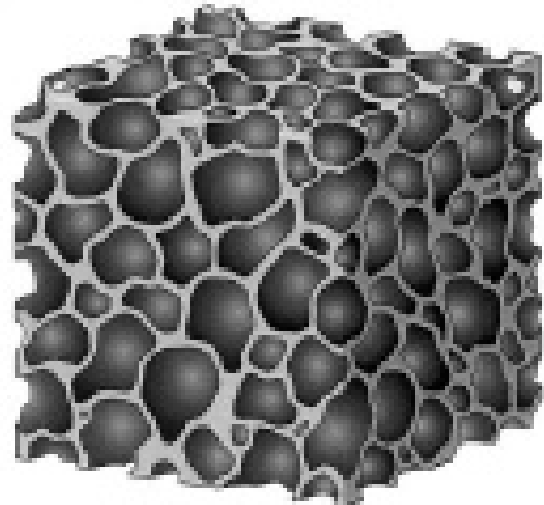
Model of  
**open cell structure**



**dust  
penetrates  
permanently**

- PVC
- PPR
- ABS
- other plastics

Model of  
**closed cells**



**permanent  
rejection of**

- Water
- Gasoline
- Oil
- Tar
- Grease
- Phenol
- Acids